

# garden fresh

The kitchen of a professional gardener blossoms with a new look thanks to smart planning and creative problem solving.



{WRITER RACHEL HAUGO PHOTOGRAPHER SCOTT LITTLE DESIGNER CATHY KRAMER}

**in this makeover** CUSTOM VENT HOOD...NEW ISLAND...  
PRETTY PENDANTS...BOOT BENCH...COZY BANQUETTE...BEADED BOARD

## Light and Bright

Designer Cathy Kramer redid this kitchen from the bottom up. She started with the tiled floor, which was in good shape, then she developed a color scheme of cool blues and crisp whites to create an updated, classic look.



before



after



**T**he 1980s ushered in the Rubik's Cube, big hair, and MTV. It was also a time for many homeowners to decorate their walls by sponge-painting. When designer Cathy Kramer stepped foot in this kitchen, it brought back memories from 20 years ago. "The walls were sponge-painted teal and purple," Kramer says.

Her goal was to do some quick updates on a cost-conscious budget and to add a lighter, brighter color scheme to the room. Kramer determined that the whole space needed a complete overhaul. The cabinets could stay and get a fresh coat of paint, but the countertops, appliances, sink and faucet, and light fixtures all needed to be replaced.

With a palette of soft blues and greens and a reconfigured floor plan, the space is now like a spring breeze—cool, clean, and crisp.

With a palette of soft blues and greens and a reconfigured floor plan, the space is now like a spring breeze—cool, clean, and crisp.

With a palette of soft blues and greens and a reconfigured floor plan, the space is now like a spring breeze—cool, clean, and crisp.

### ◀ Subtle Accent Tile

Because the tile takes up a long expanse of wall, designer Cathy Kramer wanted it to be neutral but not boring. "Adding a subtle accent tile and following the line of the range hood makes the room feel less static," Kramer says. "If it was just one straight line across, it would look a little dated and bland." Selecting white porcelain subway tile and using accent tile sparingly stretched the budget without sacrificing style.

### Custom Touches ▶

Though it looks like a high-end range hood, Kramer had the hood custom-made with beaded board. The front panel of the hood lifts up to reveal the control panel of the vent, which recycles the air. Moving the range to the center of the room broke up the long stretch of cabinetry and created another focal point.

### ▲ Out-of-Sight Storage

A concealed cubby next to the refrigerator houses the microwave. "Before it was on the counter," Kramer says. "By decluttering the counters and storing it behind the top-hinge door, it gives the kitchen a cleaner look." The lift-up, slide-back door makes the microwave easily accessible without taking up counter space.

### Island Getaway

To incorporate a focal point in the kitchen and create a good traffic pattern, Kramer designed an island that lets the family move between the cooking and dining zones and houses the dishwasher and sink. Now, the homeowner enjoys the view of her garden while doing dishes.

before





### ◀ Baking Center

To compartmentalize the homeowner's baking items, Kramer designed this corner. Nooks are for baskets, and pullout shelves accommodate rolling pins and baking pans. Kramer also repurposed a faux drawer front from the original sink area to create a door for the narrow cabinet, which stores baking sheets.



### Window Bench ▶

The kitchen was designed around the view toward the large window. Kramer designed a bench and placed it under the window as a handy spot for the homeowner to slip on clogs or boots before going out to tend her garden. The seat is made from medium-density fiberboard, which was painted; it's supported by corbels.



### ▲ Dollar-Wise Storage

When Kramer reconfigured the cabinets and moved the sink from the back wall to the island, she was left with about 8 inches of empty space in the base units on the wall. The space turned out to be the ideal spot to add shelves and stow baskets. Situated next to the baking center, the baskets keep linens and cookie decorations within easy reach.



### Garden View

The island faces the window, which allows for a relaxing view of a mature trumpet vine. To add a nostalgic touch to the room, Kramer selected a detailed, curved faucet in a soft brushed-nickel finish that is reminiscent of an old Victorian version.

## Banquette Beauty

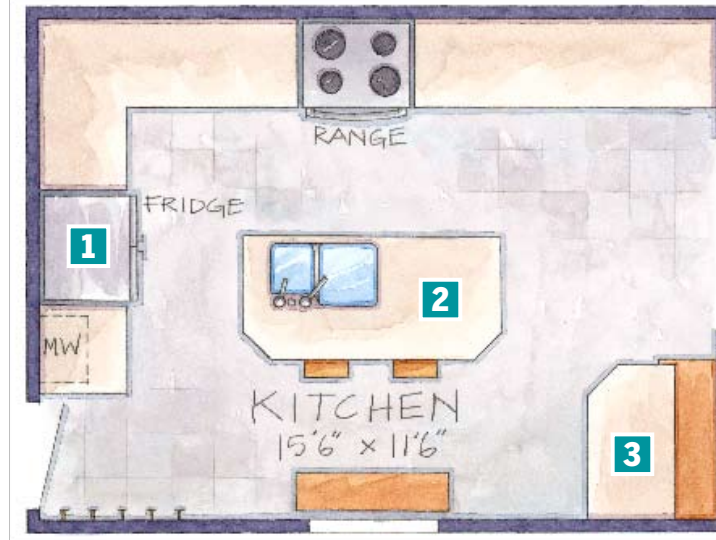
For a family of three, this banquette area for casual meals is perfectly situated in a corner. For less than \$125 in materials, Kramer added the bench and table, creating a cozy nook.



before



## {about this makeover}



### THE FLOOR PLAN

#### 1. INTEGRATED REFRIGERATOR

A cabinet-depth refrigerator blends in with the wall of cabinetry. A tall pantry was added next to the refrigerator with pull-out shelves and a cabinet door that conceals the microwave.

#### 2. THE NEW ISLAND

Designer Cathy Kramer put an island in the middle of the room to make use of what once was wasted space.

#### 3. COZY SEATING

Adding a banquette area in the corner of the kitchen creates a casual eating area. The edge of the narrow table is notched to repeat the angles on the island and create a wider walkway.

### THE BUDGET

#### APPLIANCES

■ Dishwasher	1,300
■ Microwave	450
■ Range	1,900
■ Refrigerator	2,700
■ Vent/hood	185

#### CABINTRY

■ Cabinet pulls and knobs	170
---------------------------	-----

#### PLUMBING

■ Drinking water faucet	255
■ Faucet	780
■ Sink	1,050

#### SURFACES

■ Granite counter	2,500
■ Tile backsplash	800

#### MISCELLANEOUS

■ Cabinetry storage add-ons	505
■ Chandelier	350
■ Fabric	540
■ Paint	39
■ Pendant lights	298
■ Undercabinet lighting	270
■ Window blind	1,000

**TOTAL \$15,092**



### THE SPONSORS

**APPLIANCES** KitchenAid, 800/334-6889, [kitchenaid.com](http://kitchenaid.com)

**CHANDELIER** Heavenly Lights, 800/715-1456, [heavenly-lights.com](http://heavenly-lights.com)

**GRANITE COUNTERTOPS** Granite Transformations, 866/685-5300, [granitetransformations.com](http://granitetransformations.com)

**HARDWARE** Amerock, 800/435-6959, [amerock.com](http://amerock.com)

**PLUMBING FIXTURES, UNDERCABINET LIGHTING** Ferguson, 757/874-7795, [ferguson.com](http://ferguson.com)

**PULLOUT DRAWERS** Rockler, 800/279-4441, [rockler.com](http://rockler.com)

**TILE** Daltile, 214/398-1411, [daltile.com](http://daltile.com)

**WINDOW BLIND** Kirsch, 800/817-6344, [kirsch.com](http://kirsch.com) 